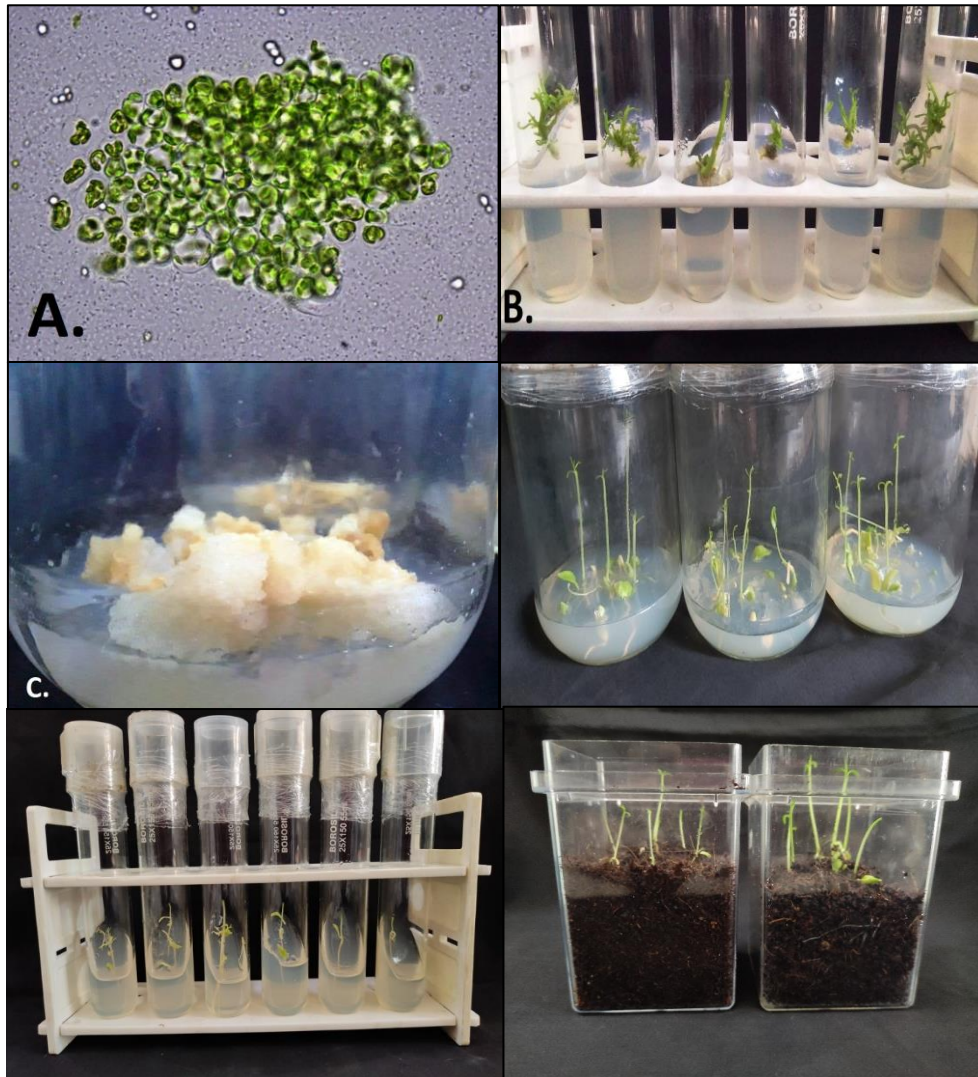
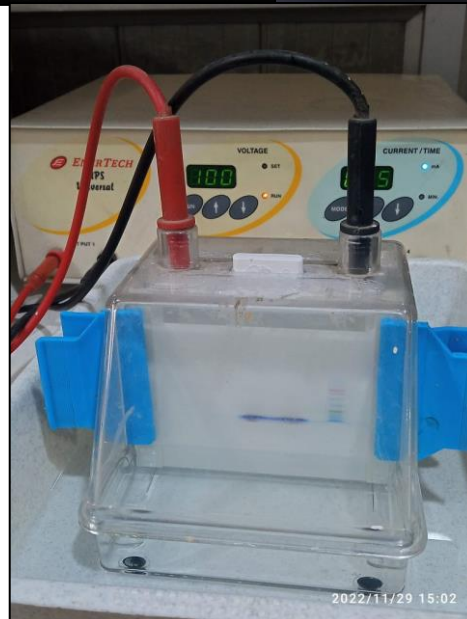


Thrust Areas of Research

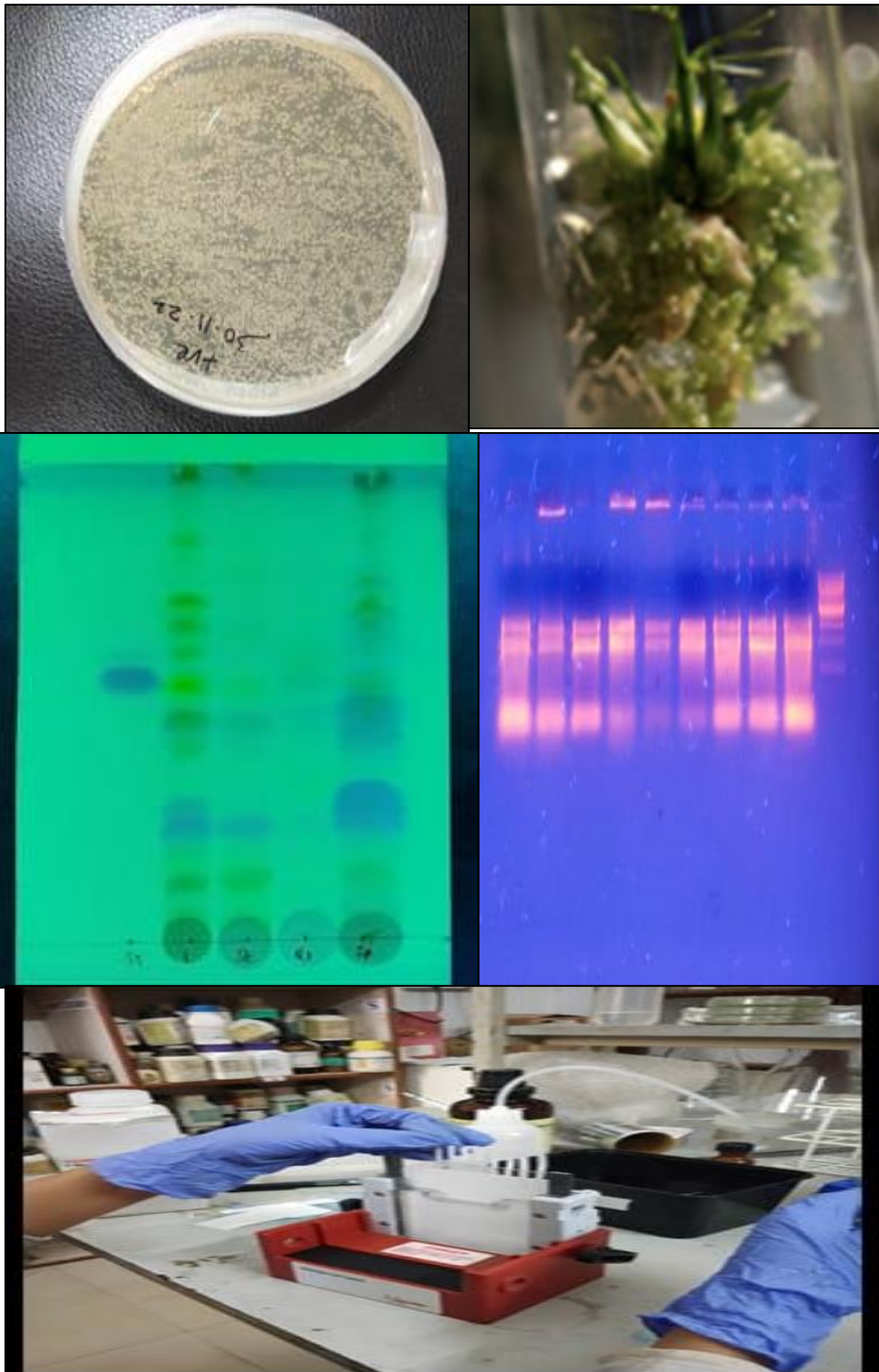
Plant Tissue Culture



Plant Pathology



Plant Molecular Biology and Biotechnology



Advanced Plant Physiology and Biochemistry



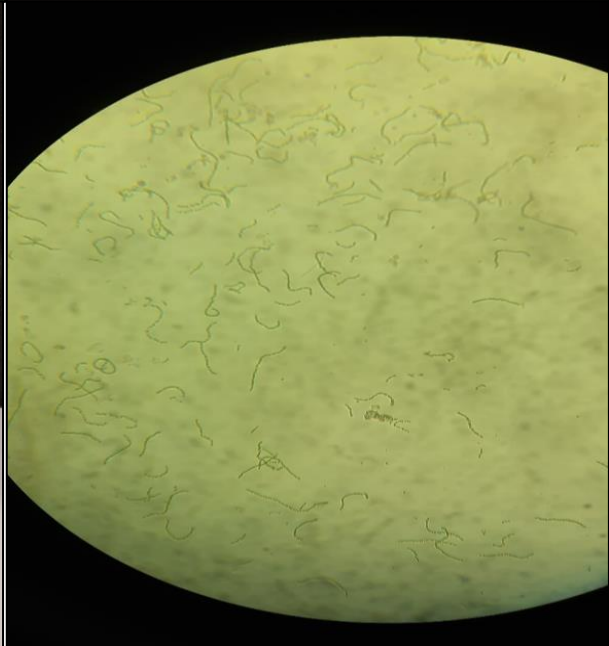
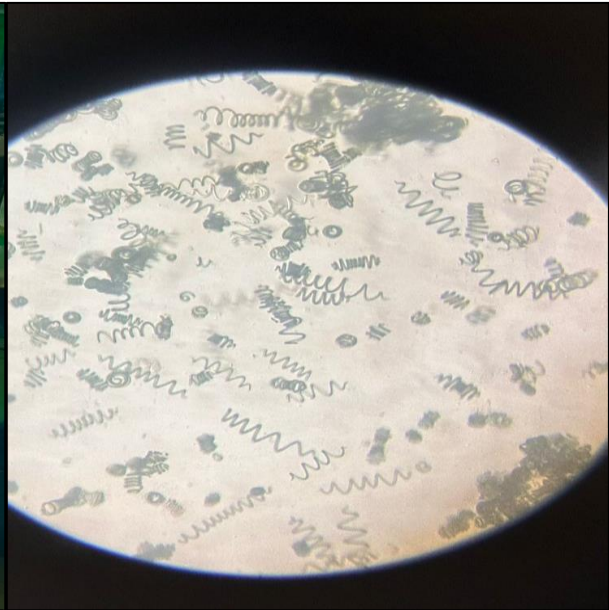
Environmental Biotechnology



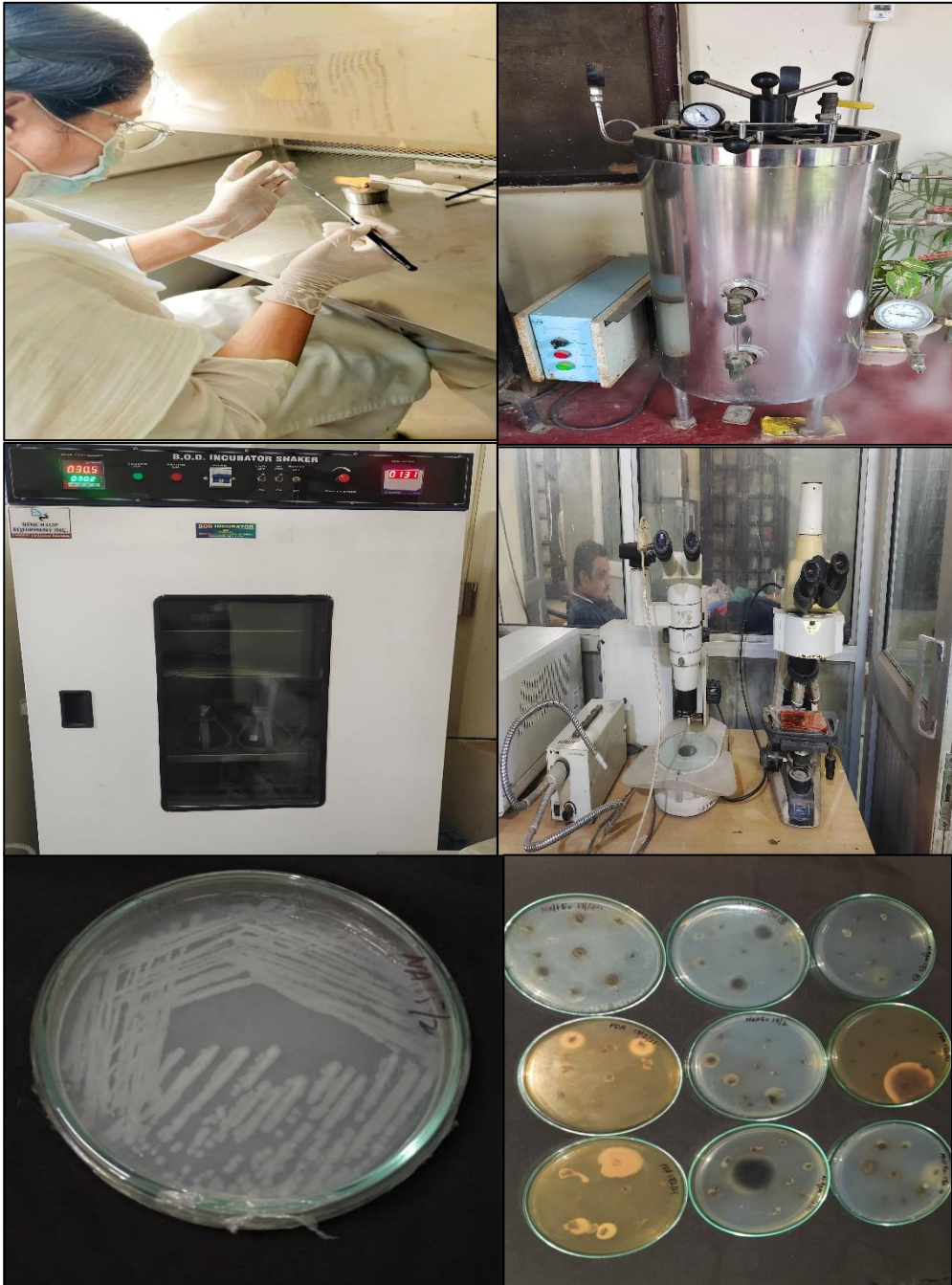
Ethnobotany



Phycology



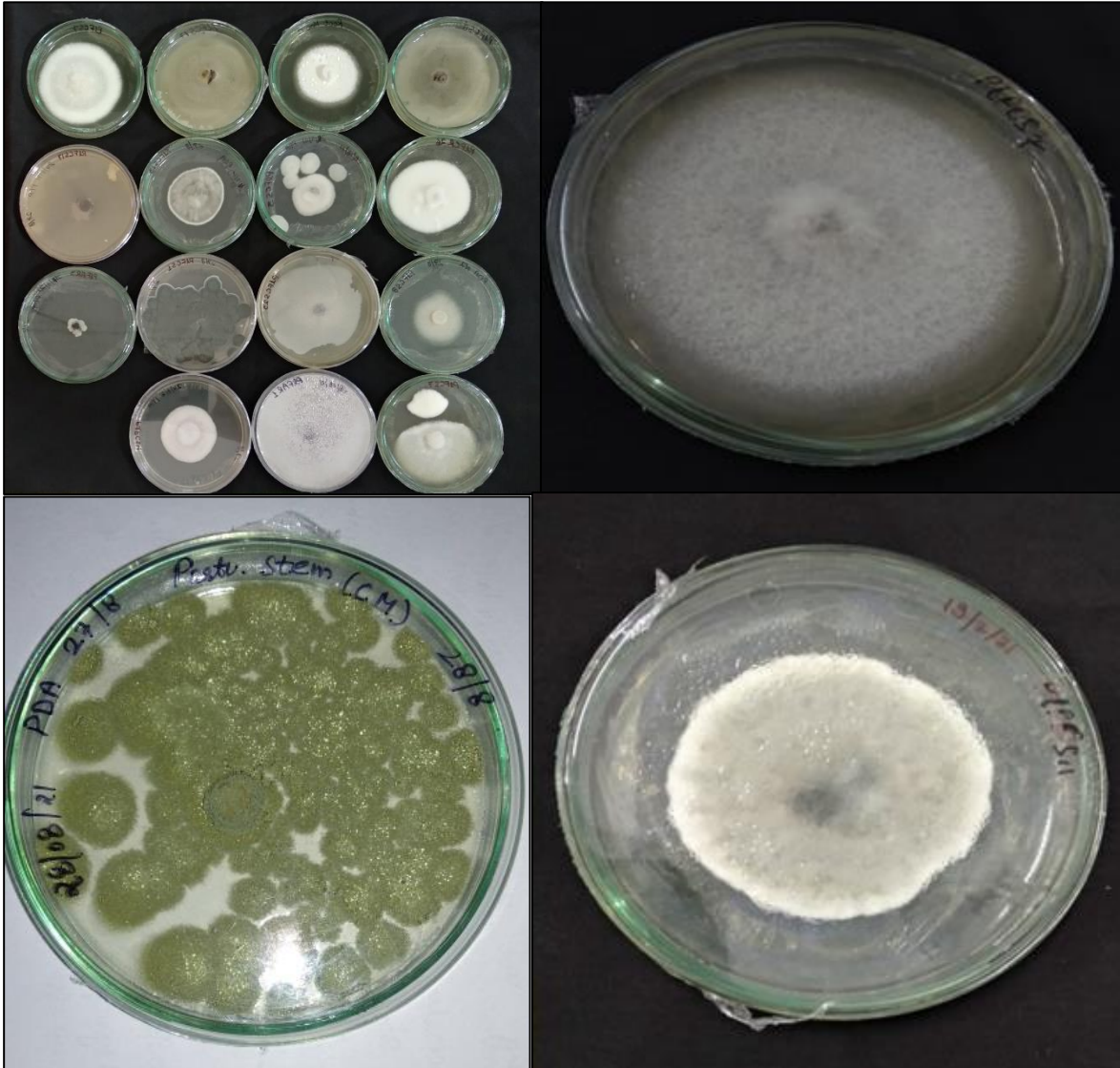
Microbiology



Bioremediation



Bioprospecting of Endophytes



Conservation of Medicinal Plants



Smart Agriculture

